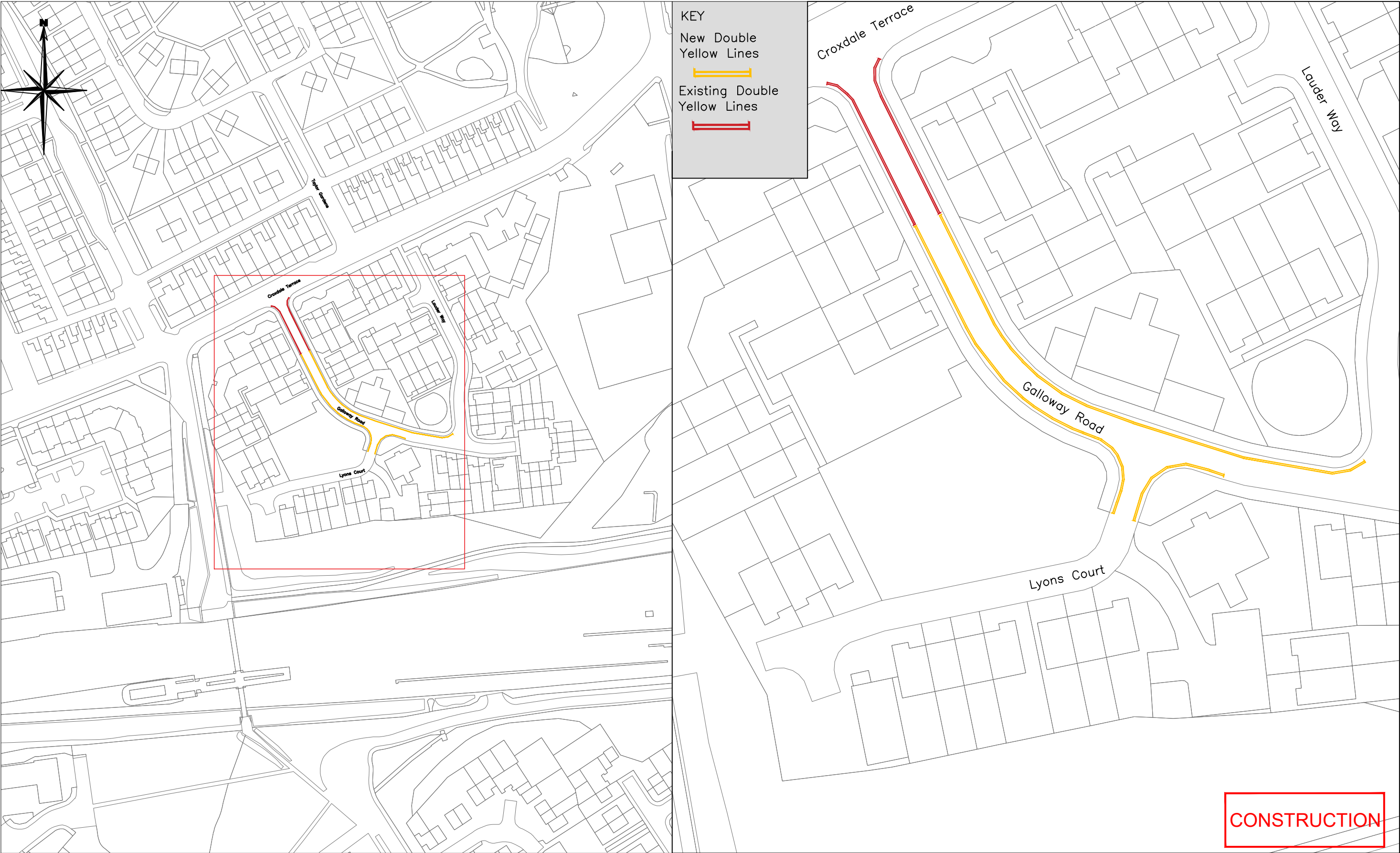



PLOTTED BY: DANIEL FRASER DATE: Monday, December 20, 2021



This map is reproduced from Ordnance Survey material with the permission of Ordnance Survey on behalf of the Controller of Her Majesty's Stationery Office © Crown copyright. Unauthorised reproduction infringes Crown copyright and may lead to prosecution or civil proceedings. O.S. License number 100019132

<div>Development, Transport and Public Protection</div> <div>Trevor Waggett B.Eng (Hons), MCIHT, FIHE</div> <div>Engineering Services Manager</div>	<div>CLIENT:</div> <div>Gateshead Council</div>	<div>DRAWING TITLE:</div> <div>Parking Restrictions</div> <div>No Waiting At Any Time</div>	<div>PREPARED BY:-</div> <div>DF</div>	<div>DATE:-</div> <div>22/06/2021</div>	<div>u3</div>
			<div>CHECKED BY:-</div> <div>NF</div>	<div>SCALES:-</div> <div>1:500</div>	
<div>  <div> <div>Civic Centre</div> <div>Regent Street</div> <div>Gateshead</div> <div>NE8 1HH</div> <div>Tel. 0191 4333000</div> <div>www.gateshead.gov.uk</div> </div> </div>	<div>SCHEME NAME:</div> <div>WI-0245 Galloway Road</div>		<div>APPROVED BY:-</div> <div>TW</div>	<div>DRAWING NO:-</div> <div>WI-0245</div>	<div>REV</div> <div>A</div>
					<div>A3</div>

PLOTTED BY: DANIEL FRASER DATE: Monday, December 20, 2021