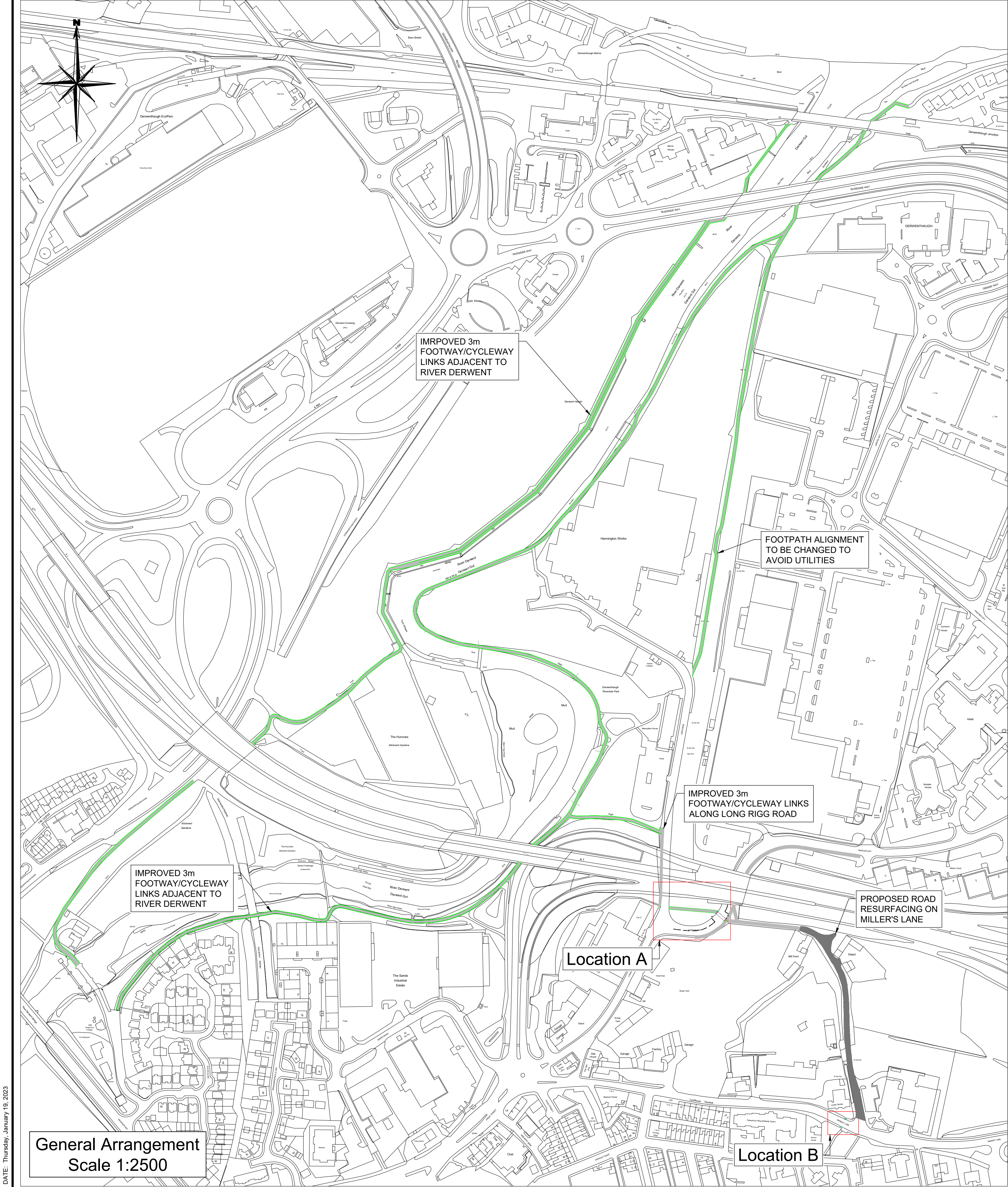
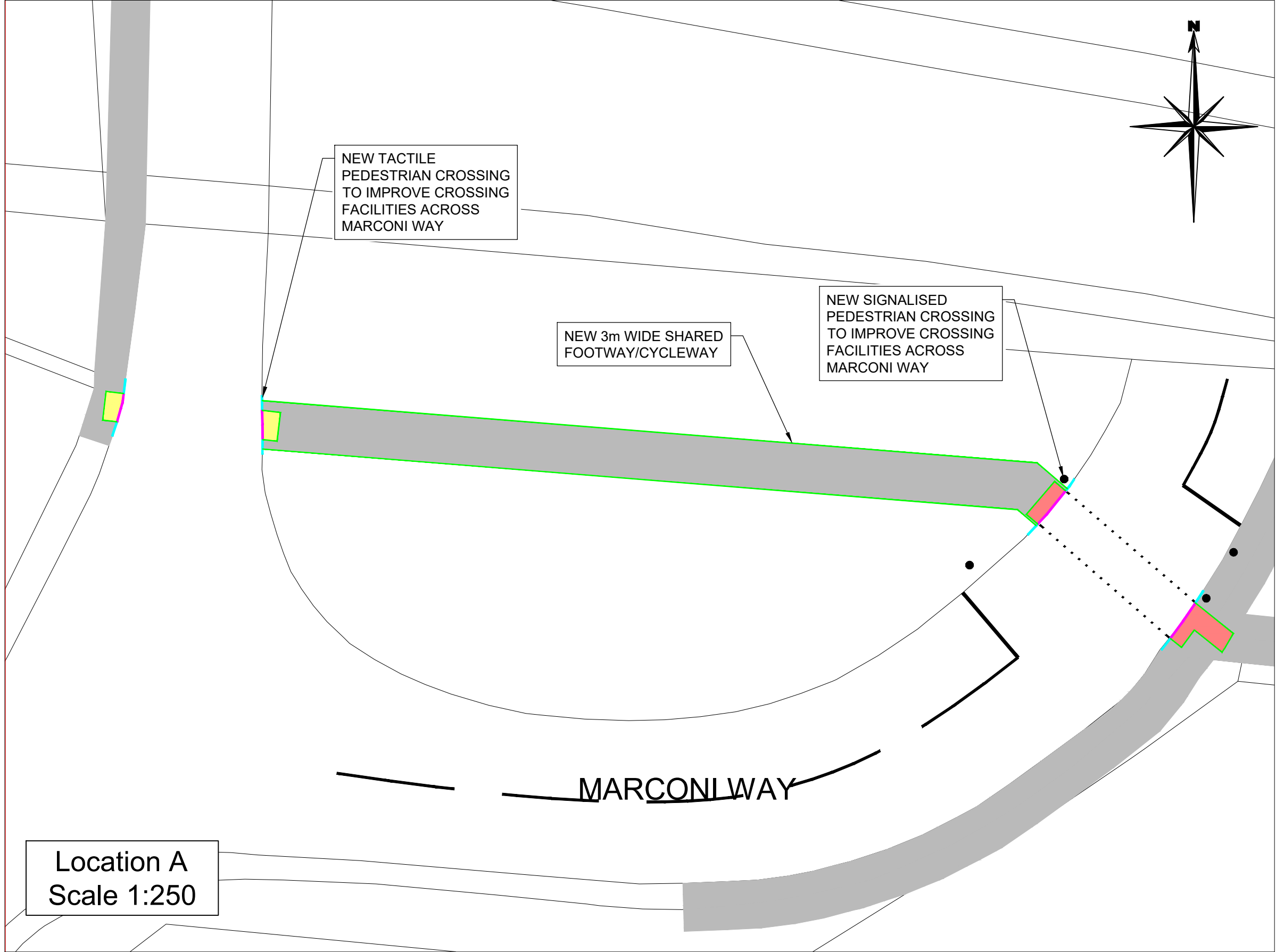


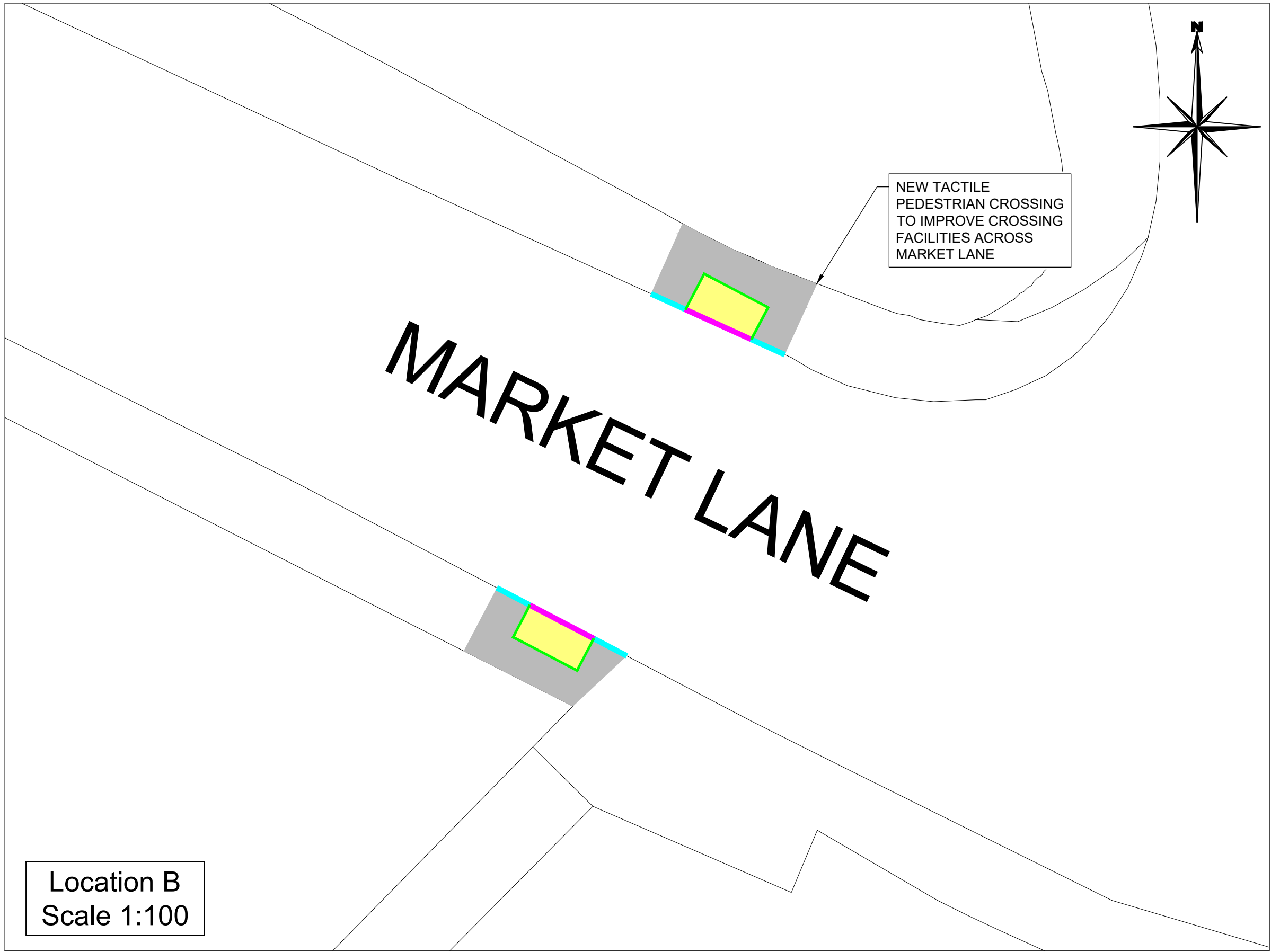
PLOTTED BY: KEANAN STEPHENSON DATE: Thursday, January 19, 2023



General Arrangement
Scale 1:2500



Location A
Scale 1:250



Location B
Scale 1:100

Key:

- Dropper Kerb to GMBC Standard Detail No. TS-11-05 Kerb Type 25 & 27
- Bullnosed Crossing Kerb to GMBC Standard Detail No. TS-11-05 Kerb Type K26
- Square Edging to GMBC Standard Detail No. TS-11-18 Edging Type E1
- Footpath Construction to GMBC Standard Detail No. TS-11-19 Flexible Construction Type F2
- Type F20 Buff Colour Tactile Blister Paving (Uncontrolled Crossing Point)
- Type F20 Red Colour Tactile Blister Paving (Controlled Crossing Point)
- 40mm HRA 35/14F Surf 40/60 designed to clause 911 14/20 PCC PSV68 AAV12 to clause 915
- Traffic Signals

CONSTRUCTION

DO NOT SCALE FROM DRAWING.
Where shown, utilities plant information is indicative only. The accuracy thereof cannot be guaranteed and all information must be verified by the contractor with the statutory undertaker.

This map is reproduced from Ordnance Survey material with the permission of Ordnance Survey on behalf of the Controller of Her Majesty's Stationery Office © Crown copyright. Unauthorised reproduction infringes Crown copyright and may lead to prosecution or civil proceedings. Gateshead Council (D.S. license No 100019132) 2008

Rev	Date	Amendments	Prepared	Checked	Approved	UT
C01	02/08/22	Revised to construction issue	KS	KR	KR	
C02	12/12/22	Additional footpath extents	KS	KR	KR	
C03	19/01/23	Changes to NW Footpath/cyclepath	KS	KR	KR	

Gateshead Council
 Civic Centre
 Regent Street
 Gateshead NE8 1HH
 Tel. 0191 4333000
 www.gateshead.gov.uk

Highways & Waste
 Trevor Waggett B.Eng (Hons), MCiHT, FIHE
 Engineering Services Manager

CLIENT:- Traffic Solutions

SCHEME NAME:- Western Metro Centre

DRAWING TITLE:- Pedestrian / Cycling Improvements
General Arrangement

PREPARED BY:- K.Stephenson	DATE:- 02/08/2022
CHECKED BY:- K.Rooney	SCALES:- As Shown
APPROVED BY:- K.Rooney	DRAWING NO:- TS-0479-0100
	REV C03